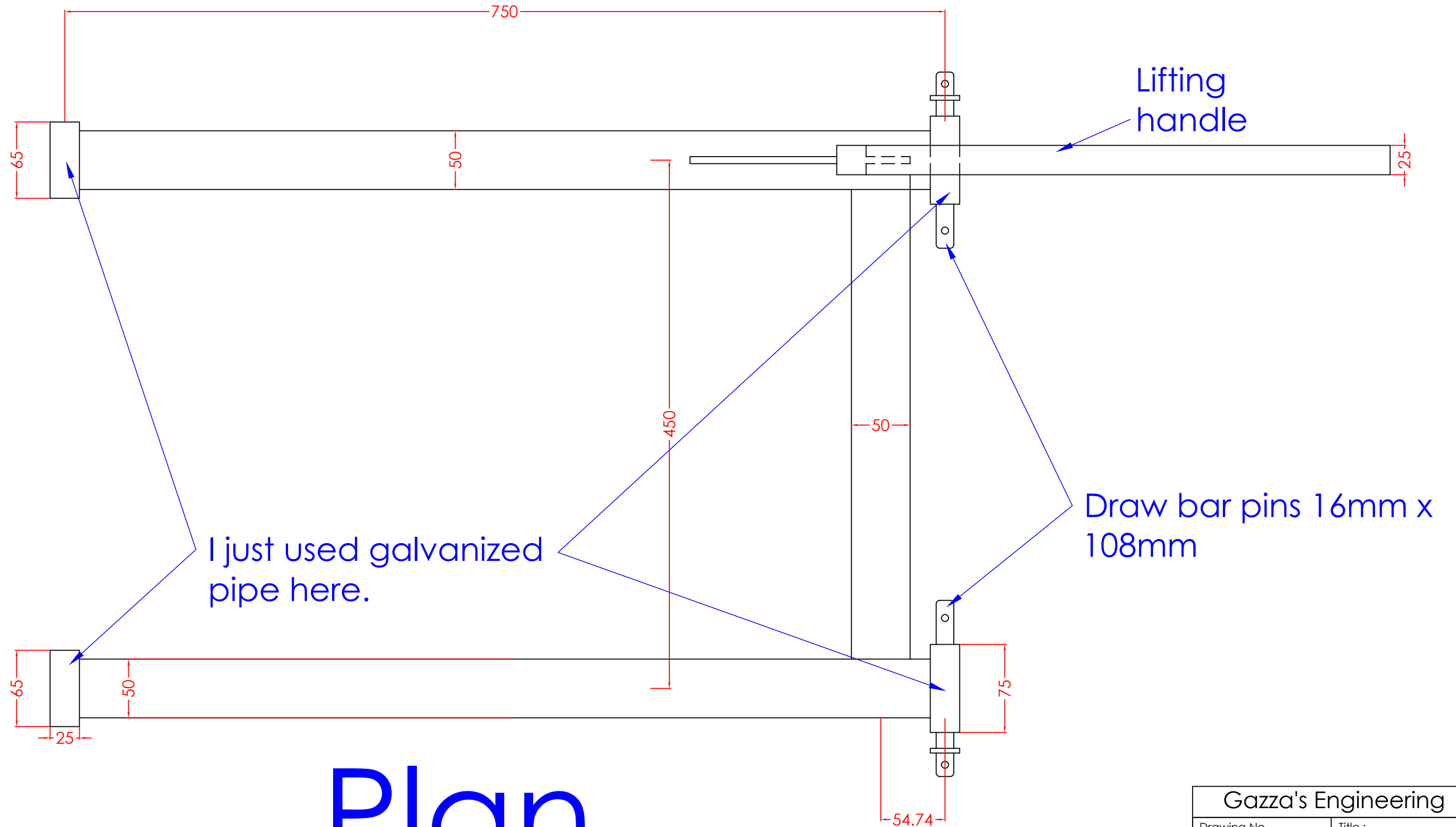
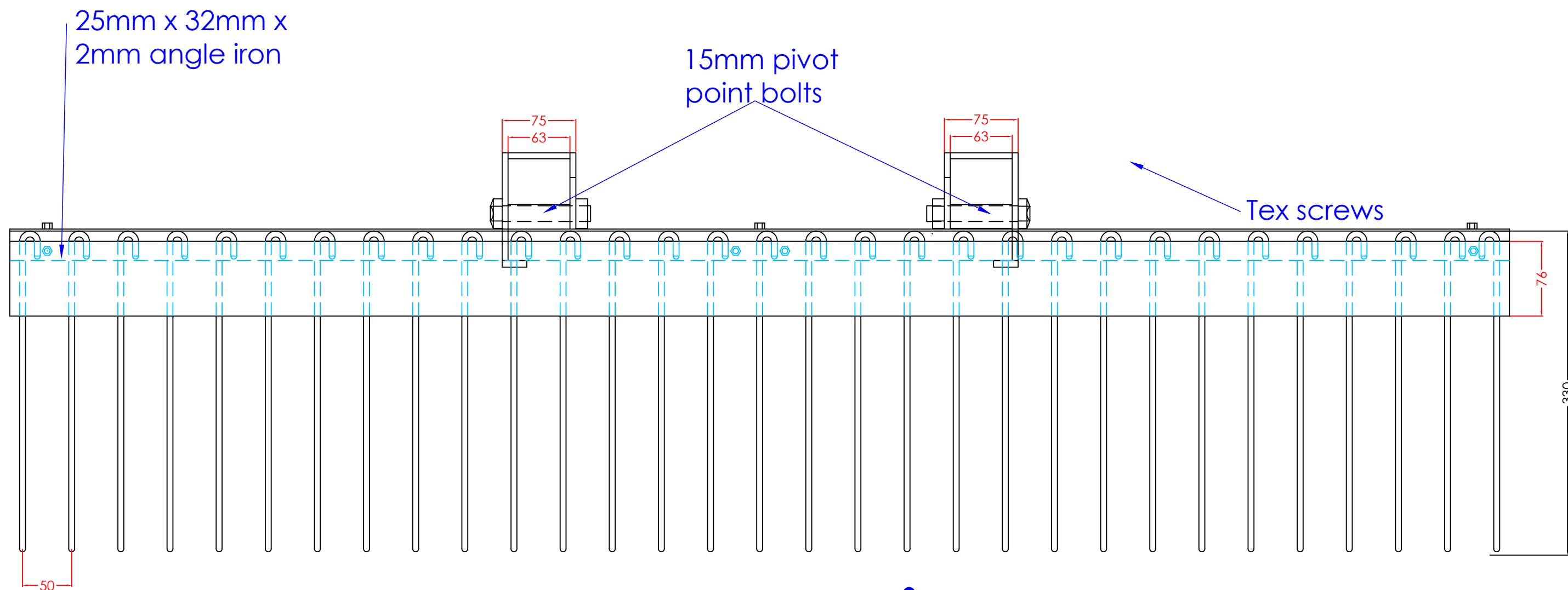


# Top View

Gazza's Engineering	
Drawing No. 2	Title : Leaf Rake
Drawn By : Gary Smith	Date : 9 Aug 2019
Scale : N/A	Sheet No. 1 of 10
Leaf rake for Hustler Super Z lawn mower	

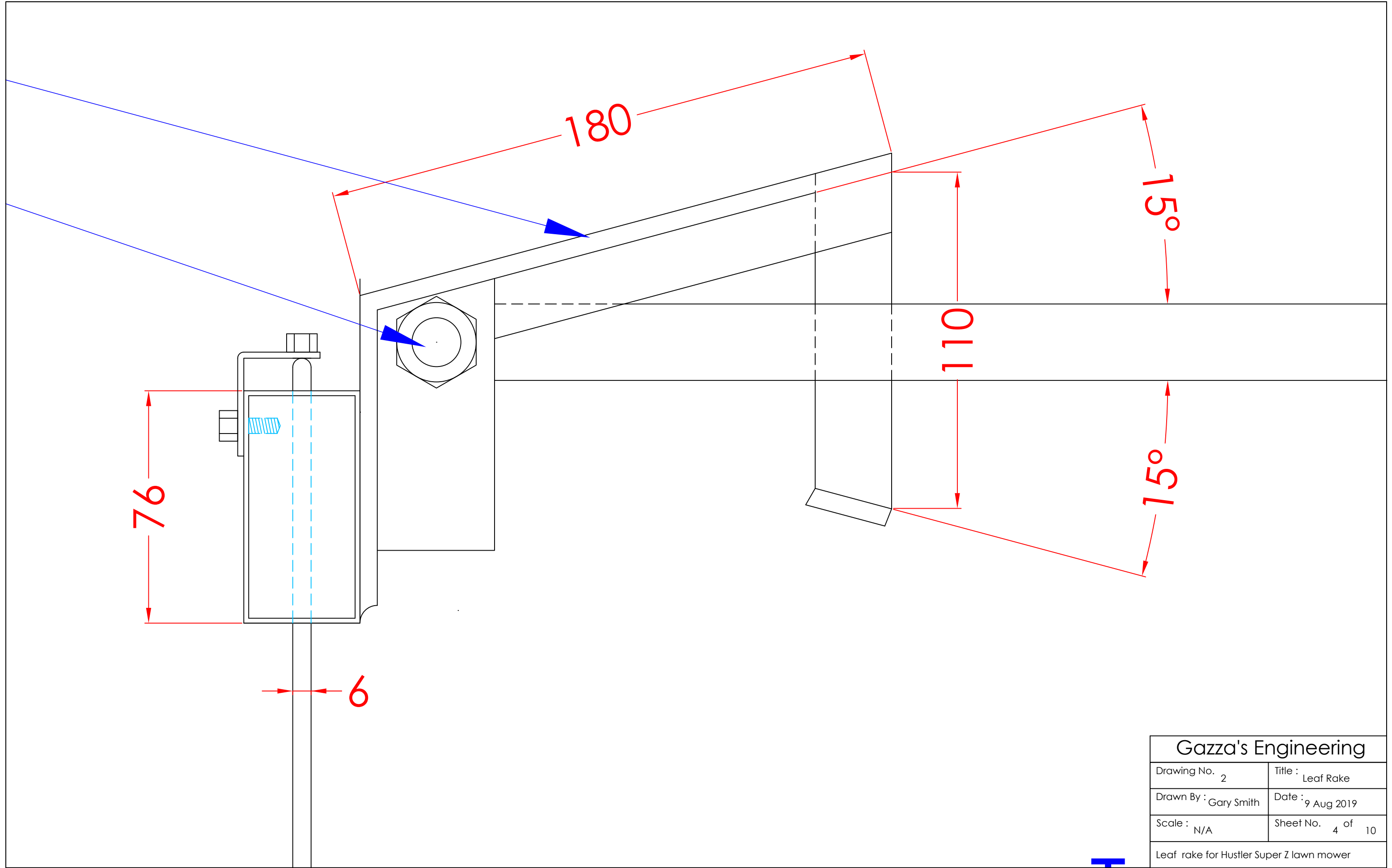


Gazza's Engineering	
Drawing No. 2	Title : Leaf Rake
Drawn By : Gary Smith	Date : 9 Aug 2019
Scale : N/A	Sheet No. 2 of 10
Leaf rake for Hustler Super Z lawn mower	



# Rear View

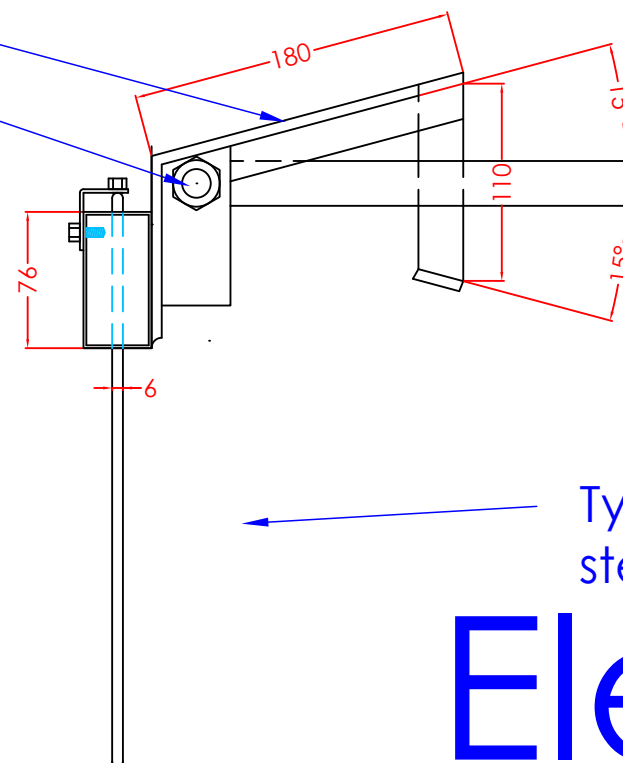
Gazza's Engineering	
Drawing No. 2	Title : Leaf Rake
Drawn By : Gary Smith	Date : 9 Aug 2019
Scale : N/A	Sheet No. 3 of 10
Leaf rake for Hustler Super Z lawn mower	



Gazza's Engineering	
Drawing No. 2	Title : Leaf Rake
Drawn By : Gary Smith	Date : 9 Aug 2019
Scale : N/A	Sheet No. 4 of 10
Leaf rake for Hustler Super Z lawn mower	

63mm x 6mm flat  
strengthened along  
sides with 25mm x  
6mm flat.

Pivot point



Tyres spring  
steel 6mm

Lifting  
handle

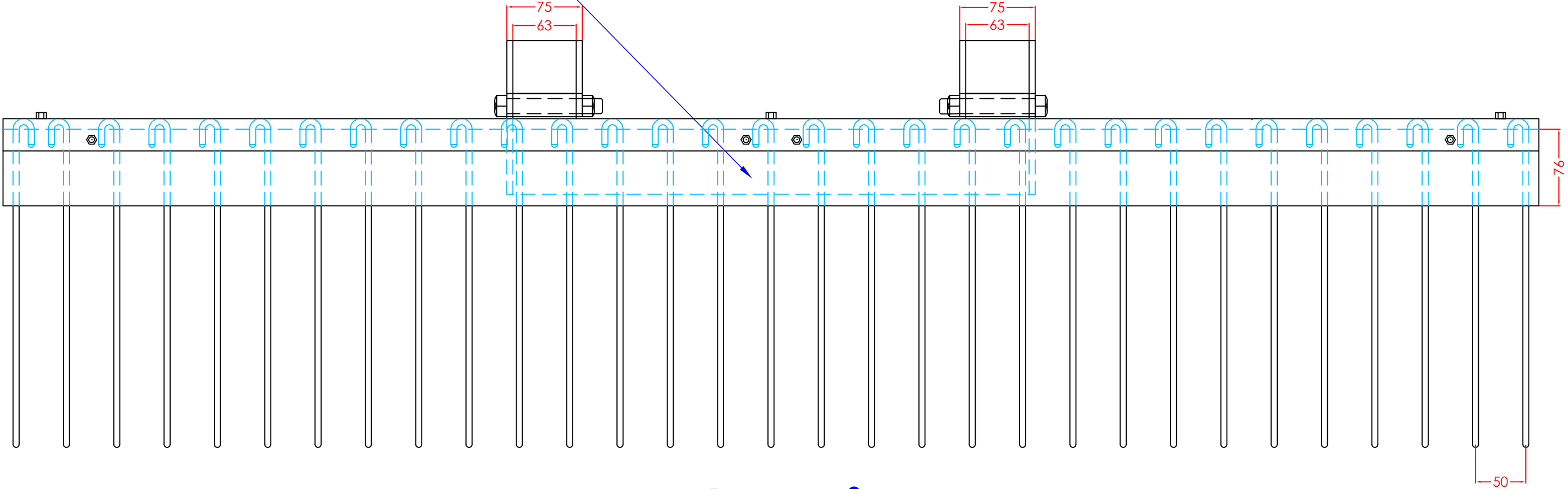
Slides into  
mower lug  
mounts, then  
pinned by  
the 150mm x  
15mm pins

# Elevation

Gazza's Engineering

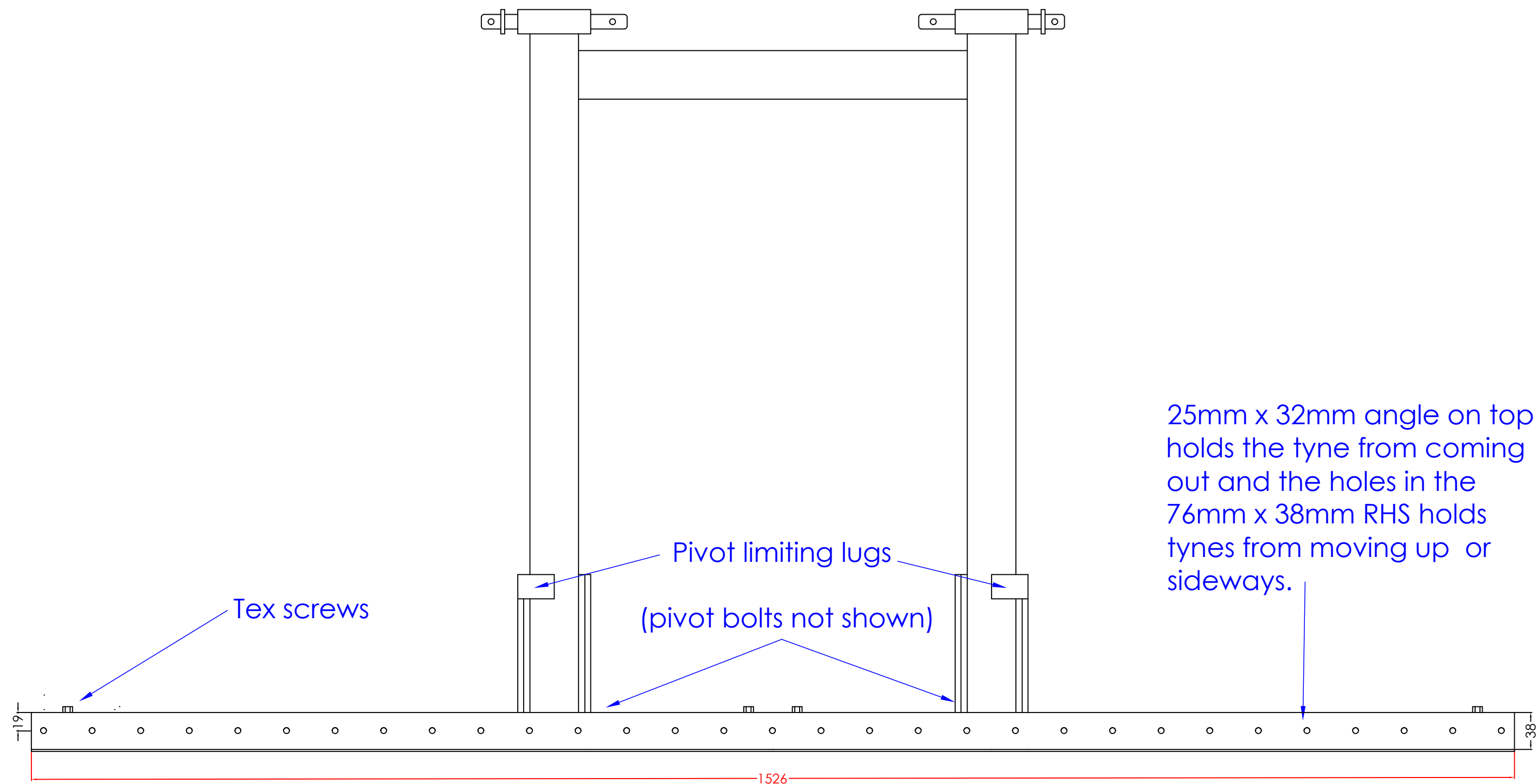
Drawing No. 2	Title : Leaf Rake
Drawn By : Gary Smith	Date : 9 Aug 2019
Scale : N/A	Sheet No. 5 of 10
Leaf rake for Hustler Super Z lawn mower	

63mm x 6mm flat  
welded to 76mm x  
38mm RHS



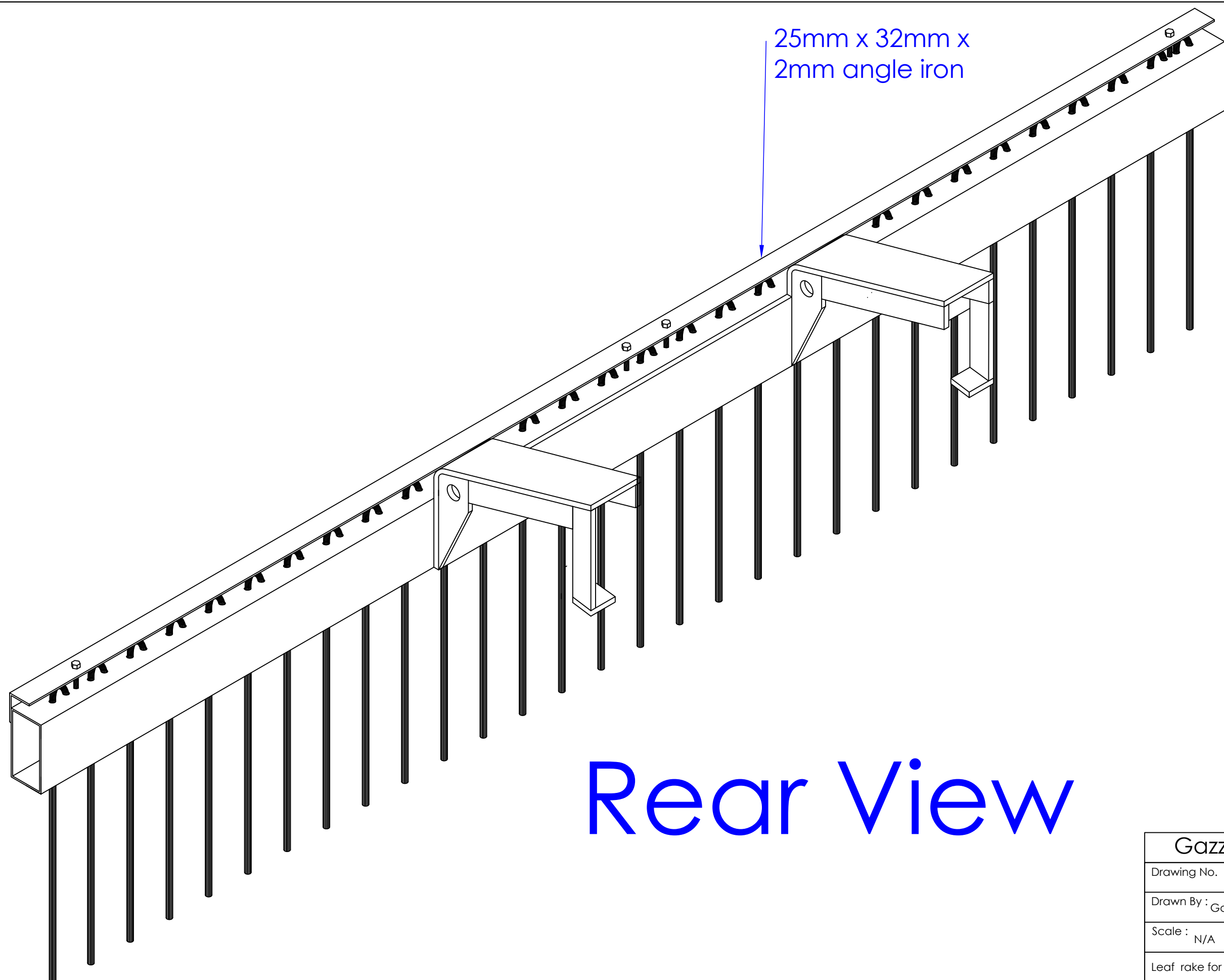
# Front View

Gazza's Engineering	
Drawing No. 2	Title : Leaf Rake
Drawn By : Gary Smith	Date : 9 Aug 2019
Scale : N/A	Sheet No. 6 of 10
Leaf rake for Hustler Super Z lawn mower	



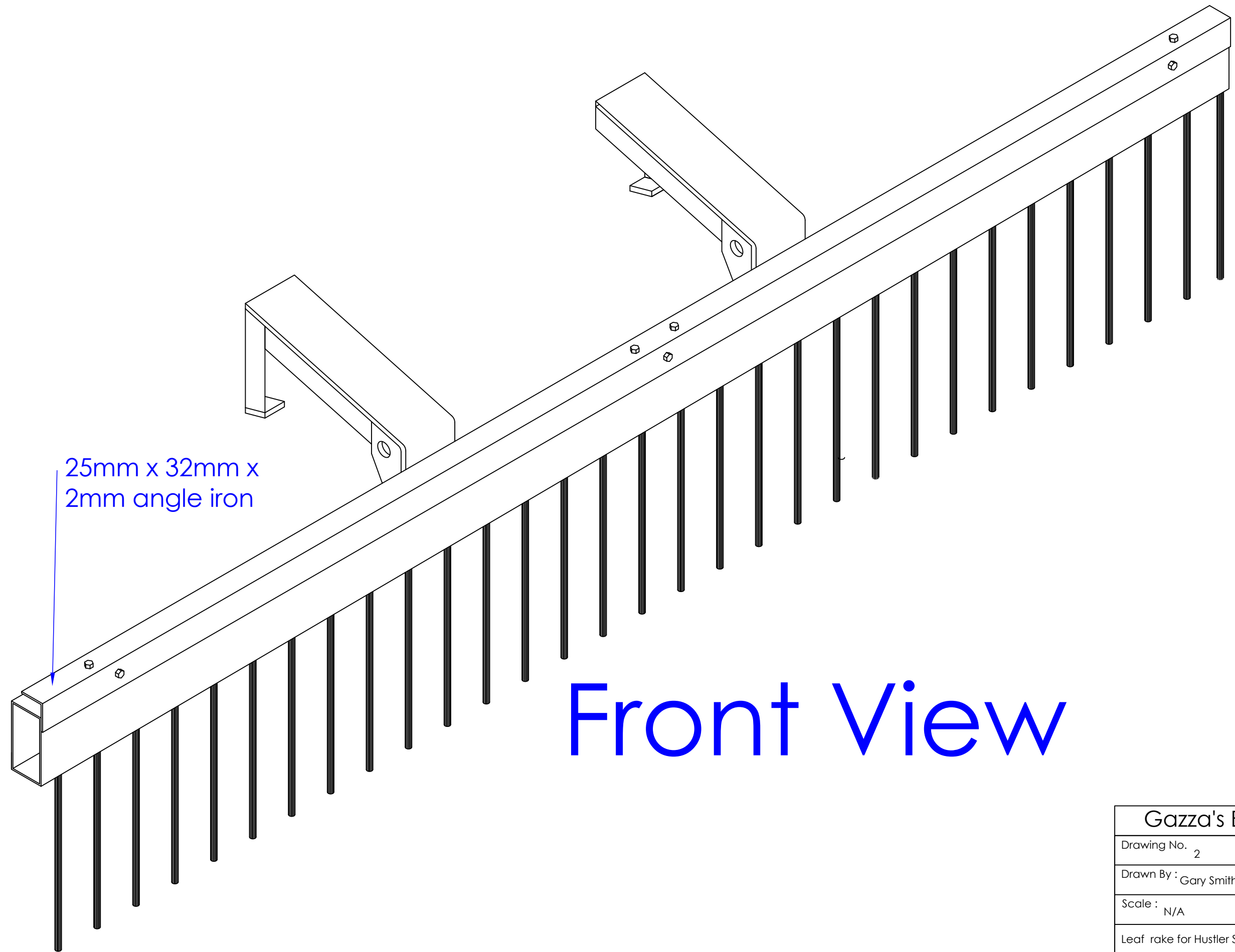
# Underneath View

Gazza's Engineering	
Drawing No. 2	Title : Leaf Rake
Drawn By : Gary Smith	Date : 9 Aug 2019
Scale : N/A	Sheet No. 7 of 10
Leaf rake for Hustler Super Z lawn mower	



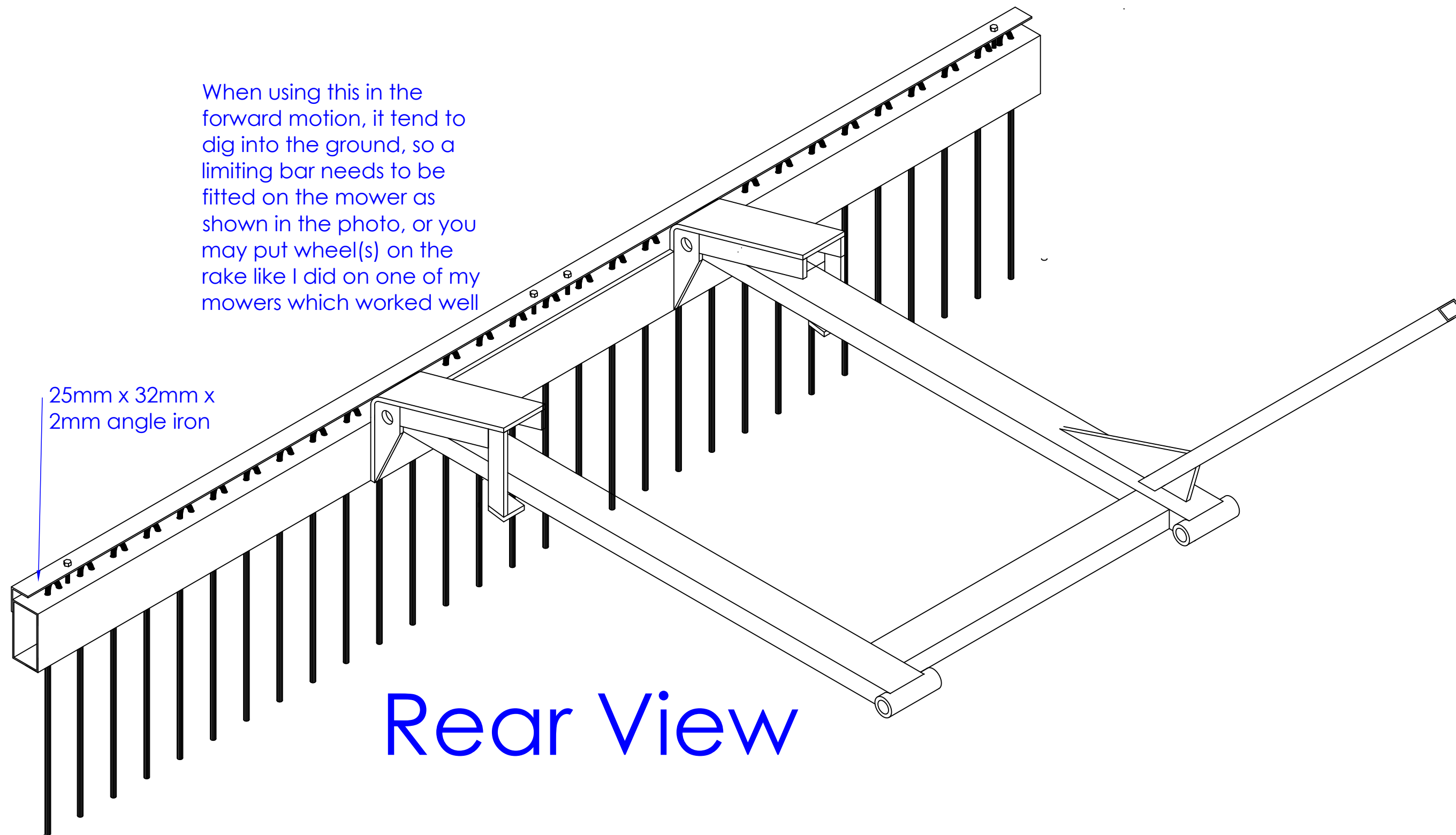
Rear View

Gazza's Engineering	
Drawing No. 2	Title : Leaf Rake
Drawn By : Gary Smith	Date : 9 Aug 2019
Scale : N/A	Sheet No. 8 of 10
Leaf rake for Hustler Super Z lawn mower	



# Front View

Gazza's Engineering	
Drawing No. 2	Title : Leaf Rake
Drawn By : Gary Smith	Date : 9 Aug 2019
Scale : N/A	Sheet No. 9 of 10
Leaf rake for Hustler Super Z lawn mower	



When using this in the forward motion, it tend to dig into the ground, so a limiting bar needs to be fitted on the mower as shown in the photo, or you may put wheel(s) on the rake like I did on one of my mowers which worked well

25mm x 32mm x 2mm angle iron

Rear View

Gazza's Engineering	
Drawing No. 2	Title : Leaf Rake
Drawn By : Gary Smith	Date : 9 Aug 2019
Scale : N/A	Sheet No. 10 of 10
Leaf rake for Hustler Super Z lawn mower	